

KLP[®]-V Glass Fiber Reinforced Pile Planking



KLP[®]-V Glass Fiber Reinforced Pile Planking offers you a robust and sustainable solution with respect to bank support.

KLP[®] has a minimum technical lifetime of 50 years, it doesn't rot or splinter and requires no maintenance and doesn't contain poisonous substances.

KLP[®]-V Pile Planking consists of solid plastic tongue and groove planks. A robust construction that is water-permeable at the same time. There are various sizes and designs to choose from.

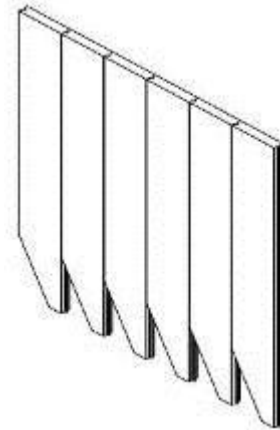


Our range also offers **KLP[®] Fenders** (steel reinforced or glass fibre reinforced) for a solid construction. A total and sustainable solution to your piling and bank support needs.

KLP[®] can easily be sawn, drilled, planed, nailed, stapled and screwed. We offer you fitting instructions and advice on construction.



Cross-cut KLP[®] Tongue & Groove board



KLP[®] Pile planking with optional guide

Durable & Environmentally friendly

KLP®-V Pile plank (glass fiber reinforced)

Dimension : 20 x 5 cm
Length : max. 390 cm

KLP® Reinforced Fender

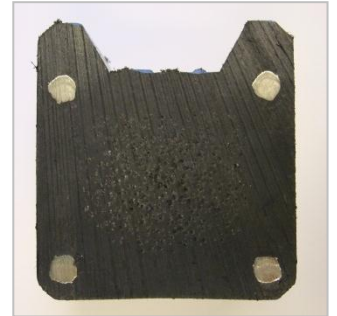
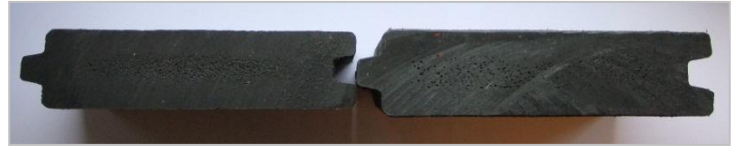
■ **KLP®-V (glass fiber reinforced)**

Dimension : 10 x 10 cm
Length : max. 315 cm

■ **KLP®-S (steel reinforced)**

Dimension : 8 x 8 x 300 cm
: 15 x 7 x 275 cm
: 16 x 8 x 400 cm
: 15 x 16 x 500 cm (with gap)

Standard colour: black



Advantages of KLP®:

- Sustainable
- Environmentally friendly
- Maintenance free
- Impact resistant
- Easy to process
- No rotting or splintering
- Recyclable
- UV, water and weather resistant
- Minimum technical lifetime of 50 years

Durable & Environmentally friendly